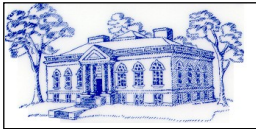


## THANKS TO OUR SPONSORS:



The Bristol Board of Education  
[www.bristolK12.ct.us](http://www.bristolK12.ct.us)



Bristol Public Library  
[www.bristollib.com](http://www.bristollib.com)



Imagine Nation Museum  
[www.imagination.org](http://www.imagination.org)

*Sign-up for a library card!*

Bristol Public Library Children's Department

5 High Street, Bristol, CT 06010

Phone: 860-584-7787 Ext. 2021

Fax: 860-584-7696

On the Web: <http://www.bristollib.com/>

Facebook: Bristol Library—Children's Department

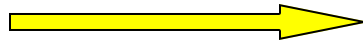
## Directory of Services for Young Children in the Bristol, CT area



Information collected by the  
Children's Department © the Bristol Public Library

## Spring 2013

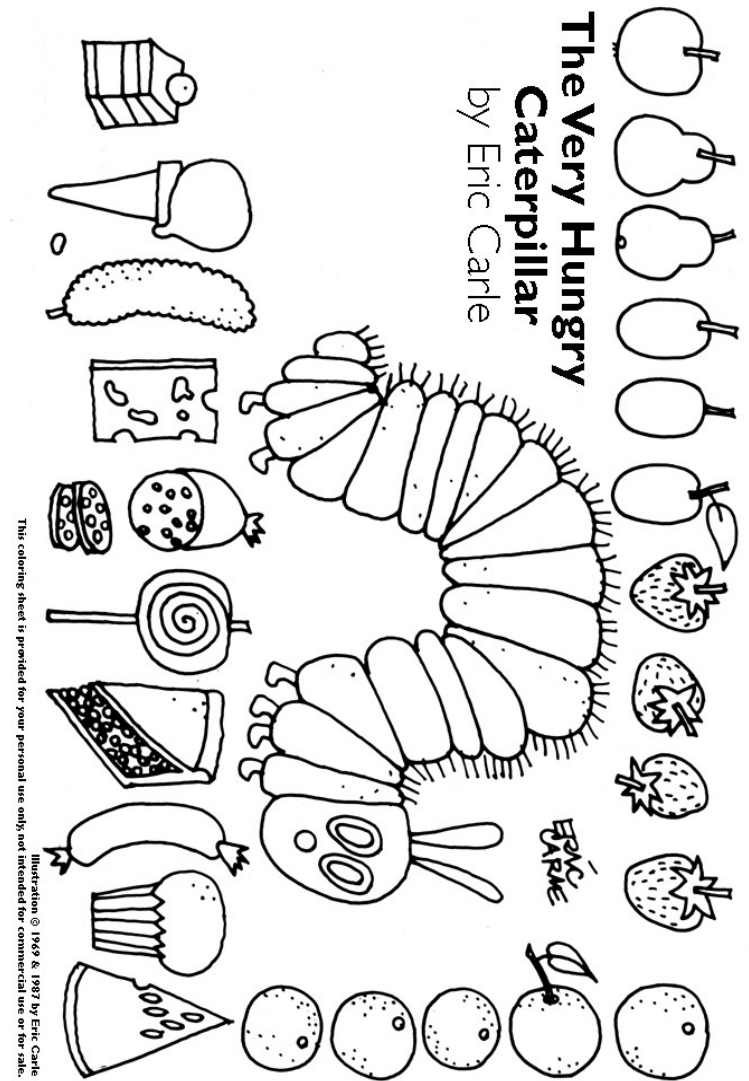
**Schools and Organizations Listed in Directory**



- A Place to Grow Too
- Bristol Burlington Health District
- Bristol Early Childhood Alliance
- Bristol Head Start
- Bristol Hospital WIC Program
- Bristol Housing Authority
- Bristol Pediatric Center
- Bristol Preschool Child Care Center, Inc.
- Bristol Public Library
- Bristol School Department
- Bristol School Readiness Council
- Carrier Learning Center
- Century Nursery School
- Child Care Resources of CT, Inc
- Christian Nursery School
- CREC: Capitol Regional Education Council
- Connecticut Parent Advocacy Center
- Family & Consumer Science—BCHS
- Family Resource Center
- Family Wellness Center (New Britain)
- Farmington Valley YMCA
- Farmington Village Dental Associates, LLC
- Friends of the Bristol Public Library
- Girl Scouts of Connecticut
- Ian-Innovative Autism Network

- Imagine Nation Museum
- Imagine Nation Preschool Learning Center
- Immanuel Lutheran School
- Kids Dental Care
- Liberty Baptist Preschool
- Magnet Education of Greater Hartford
- Mothers of Preschoolers (MOPS)
- New England Bank
- New England Carousel Museum
- Parent & Child Center at Bristol Hospital
- Pediatric Associates
- Project Interact, Inc
- Queen of Apostles Montessori Education Center
- St. Anthony School
- St. Joseph School
- St. Matthew School
- Shop Rite of Bristol
- Thaddeus Bartles, O.D. & Megan Smith, O.D
- Thomaston Savings Bank
- Tiny Teeth General Dentistry, LLC.
- Tunxis Early Childhood Center
- Wheeler Clinic
- Whiz Kids Child Development Center

**Explore...see what you discover!**



**Color!**



## Early Childhood Center

271 Scott Swamp Road  
Farmington, Connecticut

**(860) 255-3430**

Linda Rosado, *Acting Director*  
LROSADO@TXCC.COMMNET.EDU



The Early Childhood Center on the campus of Tunxis Community College provides a quality program for preschool children and is a model lab school for the Early Childhood Associate degree program. It is staffed with qualified and experienced early childhood professionals, and serves children ages three

to five years old (non-kindergarten enrolled).



The Center is among a select group in the nation accredited by the National Association for the Education of Young Children (NAEYC), and

licensed by the State of Connecticut. The Center is open to children of students, staff and members of the community. Staff members believe that young children learn best through hands-on experiences, and meaningful interactions in a carefully planned environment. The goal of the staff is to encourage the social, emotional, physical, and cognitive development of children in a safe and nurturing environment.

*Children Are Special People.*

**Hours of Operation**  
Mon-Thurs : 8am-4pm  
Friday : 8am-1pm



## CHILD CARE RESOURCES OF CENTRAL CT, INC.

***Our Organization is celebrating 25 years of service!***

Please contact us for more information  
about our members.

Child Care Resources of Central Ct, Inc.

P.O. Box 2122

Bristol, CT 06010

860-899-9024

CCRCC-kids@juno.com

Contact Person : Donna Heslin

# BRISTOL HOUSING AUTHORITY



Hours of operation:  
Monday, Wednesday & Friday  
8:30am—4:30pm  
Tuesday and Thursday  
1:00pm—4:30pm



The Bristol Housing Authority  
offers programs for children.  
Toddler Time for 18mo. To 4yrs  
2 Thursdays a Month  
Reading is Fun for 3yrs to 10yrs  
One Monday a Month  
Contact Jessica Dolan  
for more information



Bristol Housing Authority  
164 Jerome Ave  
Bristol, CT 06010  
860-585-2022  
jdunn@bristolhousing.org

## Bristol CT Early Childhood Alliance

The Bristol Early Childhood Alliance is a community organization dedicated to improving the lives of children and families in Bristol CT. We are funded in partnership with The Graustein Memorial Fund and the United Way of West Central CT.

**We encourage all community members to help in these efforts. We all will reap benefits when we reach out and help to build our youngest child!**



Bristol Early Childhood Alliance (BECA) BECA  
Community Outreach Coordinator: *Laura Watson*

Email: [makingbristolbetter@gmail.com](mailto:makingbristolbetter@gmail.com)

Phone: 860 582-9559 x402

Address: United Way of West Central CT  
200 Main Street Bristol, CT 06010

# *Fred's Puppet World*

P.O. BOX 174  
WEST SUFFIELD, CT 06093  
PHONE 860-668-1412  
FAX 860-668-4701

**We invite you to browse through our store and shop with confidence. Feel free to create an account with us if you like, or shop as a guest. Either way, your shopping cart will be active until you leave the store.**

**Browse Fred's Puppets during the 2013 SPRING PRESCHOOL FAIR or visit [www.puppetworld.net](http://www.puppetworld.net)!**

**Lots of GREAT gift and classroom ideas!**



# Play with puppets!

## Bristol School Readiness Council



Our Mission is to mobilize as a community to develop and oversee new programs and embellish existing programs in order to provide all preschool children and their families, regardless of income and special needs, the necessary requirements and resources that will allow for successful growth, education and emotional development.

[Bristol Public Schools-School Readiness Program](#)

Contact: [Mary Alice Petrucelli-Timek, Grant Manager](#)

[Phone: 860-584-7812 Ext. 148](#)

# FAMILY RESOURCE CENTER

*"The secret in education lies in respecting the student."  
Ralph Waldo Emerson*

The mission of the Family Resource Center (FRC)

is to create a strong *School-Family-Community Partnership*

in order to optimize the development of children in all domains of their lives.



## Family Resource Center locations:

[Greene-Hills School](#)

[South Side School](#)

[West Bristol K-8 School](#)

*FRC serves children from birth to age 5*

For more information contact:

**Linda Rich, MSW, Director**  
**860-584-7815 x4124**

[lindarich@ci.bristol.ct.us](mailto:lindarich@ci.bristol.ct.us)



815 Pine Street  
Bristol, CT 06010  
Phone: 860-584-8687  
Fax: 860-589-1267

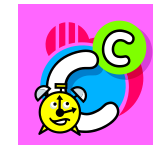
[gujjwk@snet.net](mailto:gujjwk@snet.net)



Whiz Kids Child Development Center is a unique program what encompasses the Philosophy and Theory of the Creative Curriculum. The latest knowledge and best practices related to the development and learning of children.

*WE SERVE CHILDREN AGES 1 TO 12!*

AM & PM  
SNACK  
PROVIDED



Hours:  
6:30am till 6:00pm

## CHILD STAFF RATIO

Infant and Toddler  
4:1

Preschool and School Age  
10:1

Owner: Nancy Greenfield

Director: Kelly Anelli



**Saint Matthew School**  
*Pre-Kindergarten Program*

33 Welch Drive  
Forestville, CT 06101  
860-583-5214  
stmatthewschool.com

Voted best Pre-K in Bristol  
Readers' Choice 2009

Saint Matthew Pre-Kindergarten program opened in September, 1995 to provide a quality Catholic Education for our three and four year old students, a program that ministers to the whole child; mind, heart, and hands. Students continue to be nurtured in a warm, gentle, and safe Christian environment, where children are able to grow in all areas of development.

**Pre-K 3 Year Old Program**

**2 Days:** Tues. and Thurs.  
**3 Days:** Tues., Wed., & Thurs.  
**AM Session:** 9:00-11:30

**After School Care**

2:30pm—5:30pm in main school building

**Pre-K 4 Year Old Program**

**3 or 5 Half Day**  
**AM Session:** 7:55-11:30  
**3 or 5 Full Day**  
7:55-2:30  
(3 Days a week: Tues/Wed/Thurs)

**Farmington Valley YMCA**  
**97 Salmon Brook Street**  
**Granby, CT 06035**  
**860-653-5524 ext. 138**

[www.ghymca.org](http://www.ghymca.org)



- Child Care & Education
- Teen Leadership
- Arts & Humanities
- Swim, Sports, & Play
- Camp
- Family Time
- Health, Well-Being & Fitness
- Sports, Recreation & Swim
- Group Interests
- Social Services
- Global Services
- Volunteerism
- Advocacy
- Giving



**PROJECT INTERACT, INC.**  
**27 Siemon Company Drive, Suite 312**  
**Watertown, CT 06795**  
**860-274-1558**  
**1-800-505-7000**

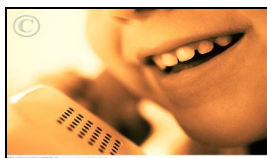
**Early Intervention Services**

*Project Interact, Inc. was established in 1994.*

**We provide:**

- Home-based Evaluations & Assessments.
- Ways to discover a child's learning style.
- Services to support child's developmental progress.
- Provide ideas for engaging child in fun and stimulating activities.

Project Interact, Inc. contracts with the Connecticut Birth to Three System. Services provided to families in the western and central towns in Connecticut

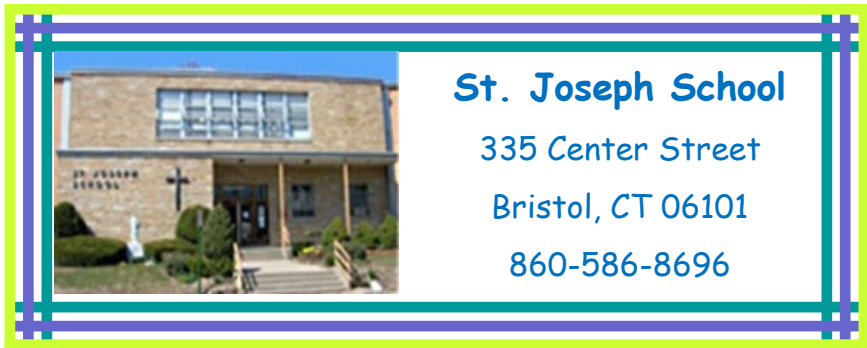


Provides support to families in Avon, Bethel, Bristol, Brookfield, Burlington, Canton, Farmington, Harwinton, New Britain, New Fairfield, New Milford, Newtown, Plainville, Sherman, Southbury, and Southington.



**Shop Rite of Bristol**

1200 Farmington Avenue  
 Bristol, CT 06010  
 860-584-8022



**St. Joseph School**  
 335 Center Street  
 Bristol, CT 06101  
 860-586-8696

Contact:

Katie Duchemin

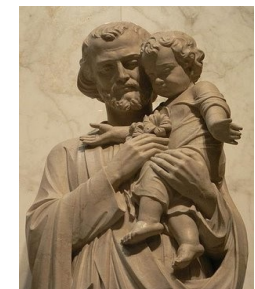
[kduchemin@saintmikesalum.com](mailto:kduchemin@saintmikesalum.com)

**We serve  
 ages 3-5!**

As Catholic early childhood educators, we minister to the whole child—MIND, HEART, AND HANDS. In trusting Christian environments we enable the child to grow spiritually, emotionally, socially, physically, and intellectually. Awakening the child's innate desire to learn, we foster creativity and excitement about learning by facilitating a stimulating atmosphere. Understanding their uniqueness in personality and differences in learning styles creates opportunities to discover, explore, question, and succeed, thus providing the proper atmosphere which enables the child freedom of choice. ABOVE ALL, our setting nurtures the child's spiritual relationship with God and self and develops a caring attitude for others.

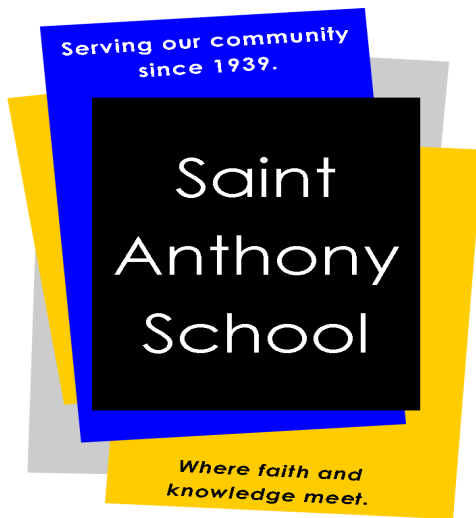
*Before Care*  
 is available  
 from 7am  
 and  
*After Care*  
 Till 5pm

Class size for 3's is 16  
 for 4's is 25  
 Student/Staff Ratio is:  
 8:1 for 3's  
 &  
 10:1 for 4's



**TUITION ASSISTANCE IS AVAILABLE**





30 Pleasant  
Street  
Bristol  
CT 06010  
860-582-7874

[stanthonysschoolct.org](http://stanthonysschoolct.org)

St Anthony School is fully accredited by the New England Association of Schools and Colleges. We offer a rigorous, interactive curriculum that encourages cross curricular exploration in: Religion, Mathematics, Social Studies, Language Arts, Literature, Science, and Foreign Language. Each classroom is fully equipped with a SMART Interactive Whiteboard, wireless Internet connectivity, laptop, and additional desktop computers.

### Early Childhood Programs

St. Anthony School offers flexible scheduling options for Pre-K 3 and 4 year old students. For your convenience, 2, 3, and 5 half or full day options are available. We also offer full-day Kindergarten! Students experience an interactive curriculum, rich in spirituality and values that will last a lifetime.

### Before & After Care

We provide morning care, beginning at 6:30 a.m. with breakfast, and after care ending at 6:00 p.m. Students participate in organized activities in a safe, secure environment.

### Summer Programs Available



The Friends of the Bristol Public Library, Inc. was formed in 1980 as a non-profit volunteer organization. We depend on the energy and enthusiasm of our members to fulfill our purpose and promote our public library as a cultural, educational and recreational asset to the city of Bristol / Forestville.

We maintain the Friends Bookstore on the Main Library lower level. Stop in and get some great bargains on books and A-V materials. Call 860 584 7787 X 2033. With funds raised through book sales and other activities, we sponsor and support programs, library materials and furnishings not supplied by Library resources.

Join the FRIENDS!

**Teachers:** the Friends of the Bristol Public Library BOOK STORE is a GREAT PLACE TO PICK UP CLASSROOM books! The store is open on Mondays, Thursdays, and Saturdays...check at the Circulation Desk for open hours!

The Friends have a WINTER BOOK SALE in February. Kids books are .10, .25, and \$1.00

Innovative Autism Network provides your family and child with the most effective therapies in a supportive and fully integrated learning environment.

From in-home or clinic based therapies to social skills and enrichment classes, IAN helps find your child's unique "roadmap" to success and recovery.

- ABA, Speech & OT Therapies
- Center & Home Based Programs
- Intensive Social Skills Groups
- Year-Round Groups & Classes
- Community Outings
- Parent Support Groups
- 7-Week Summer Therapy Program

*Insurance Accepted for Most Services*



**Innovative Autism Network**

17 Farmington Ave • Plainville, CT • 860-351-5407 • [www.iannetwork.com](http://www.iannetwork.com)



**More Opportunities to Learn**



**Exploring Our World Together**



**More Opportunities to Grow**



**A Place to Grow Too**  
**271 Enterprise Drive**  
**860-583-9391**

A Place To Grow Too Daycare and Learning Centers are based upon the principles of developmentally appropriate practice.

Our goal is to give each child a warm environmental that will encourage the development of socialization skills, independence, and a positive self-image. Our experienced teaching staff embraces the view that each child is unique person with an individual pattern and timing of social, physical, and intellectual development. Teachers manifest their respect for children by encouraging them to think for themselves, to make decisions, to work towards their own solutions, and express their own ideas and feelings. We recognize and foster an active partnership between home and school.

- \* Open Year-Round
- \* Open 7:00am to 6:00pm
- \* Full or Part Time Available
- \* Small Nurturing Environment
- \* Nutritional Snacks Served Daily
- \* Large Fenced Playground



**DISCOUNTS ARE AVAILABLE FOR:**

Siblings, Corporate Enrollment, Referrals, Prepaid Monthly Tuitions



165 Capital Ave  
 Room 363  
 Hartford, CT 06106  
 860-713-6990

Our Schools:

- ◆ Breakthrough Magnet (PK3-8)
- ◆ Environmental Sciences School @ Mary Hooker (PK3-8)
- ◆ Montessori Magnet School @ Annie Fisher (PK3-6)
- ◆ Capital Preparatory (PK3-12)
- ◆ Kinsella Magnet School of Performing Arts (PK4-8)
- ◆ STEM Magnet School @ Annie Fisher (K-8)
- ◆ Classical Magnet School (6-12)
- ◆ Hartford Magnet Trinity College Academy (6-12)
- ◆ Sport & Medical Sciences Academy (6-12)
- ◆ Pathways to Technology (9-12)
- ◆ University High School of Science & Engineering (9-12)

**Magnet Education of Greater Hartford:**

- For students Pre-K—12th grade
- Caters to 50 cities and towns in the greater Hartford region
- Tuition Free Education
- Transportation is FREE to Bristol Families
- Class sizes are no larger than 22 students

OUR SCHOOLS ARE ALL  
 NATIONALLY RECOGNIZED,  
 AWARD WINNING  
 MAGNET SCHOOLS!

In 2011, Hartford Magnet Trinity College Academy won the Magnet School of the Nation Award!



Parent and Child Center at Bristol Hospital  
 9 Prospect Street  
 Bristol, CT 06010  
 860-585-3481

To promote and support healthy families through education and resources that help them understand how to work together to provide a safe, nurturing and stimulating environment for children to live and grow. To increase public awareness about child safety, community resources, and family life through events, workshops, mentoring, and referrals. To collaborate with service providers to sustain ongoing agency networking, ensuring that the needs of every family are met and child abuse and neglect are prevented.

The Parent and Child Center at Bristol Hospital has a special goal, which centers on the important concept of "Family Life Works". Our primary focus is on prevention of child abuse, neglect and family violence by providing support systems for at-risk families. Our programs are designed to target several areas that have been identified as crucial to developing strong, nurturing families: stress/anger management, family finances, child development, communication skills, effective discipline, and planning/decision-making skills.

Please go to our website or call us to get a full description of all the programs we offer. Some of them are:

- ⇒ Parent Support Center
- ⇒ The Caring Closet
- ⇒ Nurturing Families Network
- ⇒ The Family Life Works Program
- ⇒ The Maternal/Child Health initiative (MCHI)
- ⇒ The Parents Alone Raising Kids Program (PARK)
- ⇒ Home-Based Parent Education Service

VISIT US ON THE WEB:

<http://www.bristolhospital.org/Services/parent.aspx>



*Wheeler is a state funded program aimed at improving the overall social, emotional health, and social skills of children birth to age 5. Masters level consultants work with directors, teachers, and families to find strategies which will provide positive outcomes for young children.*

For more information contact:

***Marci Arroyo***

Marroyo@wheelerclinic.org

**New Britain Office**  
**860-348-2292 (voice)**  
**860-224-1918 (fax)**

Hours are:

Monday—Friday 9:00am till 5:00pm



## Immanuel Lutheran School

154 Meadow Street  
Bristol, Ct 06010

[www.ImmanuelLutheranBristol.org](http://www.ImmanuelLutheranBristol.org)

**860-583-5631**

Contact our school office today with questions or to arrange for a personal Pre-K school tour.

Immanuel Lutheran offers the preschool child and opportunity to be in child-sized world where Christian values, morals, and manners are emphasized. The Pre-K school strives to develop a strong foundation of readiness skills in every child. The Pre-K school is available to all who wish to register. Children are eligible for enrollment regardless of race, religion or ethnic background. Class sizes are limited and registration is on a first come first serve basis so inquire and register sooner than later to assure your child's enrollment.

### 3 Year Old Classes

Tuesday & Thursday  
Mornings and afternoons  
8:00 a.m. -11:00 a.m.  
11:30 a.m. -2:25 p.m.  
5:1 teacher-student ratio  
Afterschool care available

### 4 Year Old Classes

Monday, Wednesday, Friday  
Mornings and afternoons  
8:00 a.m. -11:00 a.m.  
11:30 a.m. -2:25 p.m.  
5:1 teacher-student ratio  
Afterschool care available



320 Main Street  
Farmington, CT 06032  
(860) 676-2288

[www.farmingtonctdentist.com](http://www.farmingtonctdentist.com)

Continuing Education & Training

You can be confident in us as your qualified dental healthcare professionals. We are fully trained and certified to provide you with the dental expertise you are looking for. To fulfill our responsibility to Continuing Education, we annually attend dental conventions, seminars, and clinical courses to keep informed about new products, equipment, and advancements in dental treatment techniques.

Positive Childhood Dental Visits

Early dental care ensures healthier teeth and better smile growth for your child, and it can also lower the cost of dental treatment needed in later years. More than 1 in 4 children in the U.S. have cavities by age 4, and some as early as age 2. Our doctors want to reduce your child's risk of developing cavities. Another very important part of childhood dental visits is learning! We make it easy and fun for your child to learn about good oral health habits. We are here to provide positive dental experiences for your child (and you) right from the first visit!



# Bristol Pediatric Center

160 Wolcott Street  
Bristol, Connecticut 06010  
860-589-8872  
[www.ProHealthMD.com](http://www.ProHealthMD.com)

Our Practice:

Our providers are proud to serve and enrich the community in which they live, work, and raise their families. Regular community involvement brings us one step closer to getting to know our patients—the key to delivering exceptional care. Our office provides separate well and sick waiting areas and is handicapped assessable with convenient access to parking and public bus transportation. Spanish and English are spoken in our bilingual practice. Please call our office if you are interested in attending one of our frequent prenatal clinics.

Office Hours:

Monday, Tuesday, & Wednesday 9:00 a.m.-7:30 p.m.  
Thursday & Friday 9:00 a.m.-5:00 p.m.  
Saturday 9:00 a.m.-12:00 p.m.  
On-call physician after hours always available

Facility Affiliations:

Bristol Hospital  
The Hospital of Central Connecticut



*Physicians to Infants, Children, and Adolescents*

**43 Enterprise Drive  
Bristol, CT 06010  
860-589-5230**

[www.pediatricassociatesbristol.com](http://www.pediatricassociatesbristol.com)



**Hospital Affiliations:**

**Bristol Hospital & Connecticut Children's Medical Center**



***Pediatric Associates* provides comprehensive medical care for the newborn, infant, child and adolescent. Our goal is to provide the highest quality, up-to-date care for children throughout all stages of growth and development. Our staff of compassionate individuals works as a team and is here to help you.**



## **CREC Schools**



Capitol Regional Education Council

### *Preschools and Elementary Schools*

Discovery Academy (Pre K-5)

Glastonbury-East Hartford Elementary Magnet School (Pre K-5)  
Greater Hartford Academy of Arts-elementary (PK3, PK4 and K)

International Magnet School for Global Citizenship (Pre K - 5)

Medical Professions and Teacher Preparation Academy (Pre-K)

Montessori Magnet School (Pre K-6)

Museum Academy (Pre K-5)

Reggio Magnet School of the Arts (Pre K-5)

University of Hartford Magnet School (Pre K-5)

### *Secondary Schools*

Academy of Aerospace and Engineering formerly Math and Science Academy (6-12)

Medical Professions and Teacher Preparation Academy (6-12)

Metropolitan Learning Center for Global and International Studies (6-12)

Public Safety Academy (6-12)

Two Rivers Magnet Middle School (6-8)

Two Rivers Magnet High School (9- )

Greater Hartford Academy of Arts- middle school (6- )

Greater Hartford Academy of Arts High School- Full day or Half day  
(9-12)

Greater Hartford Academy of Math and Science High School- Half day only  
(9-12)

CREC also offers the Open Choice Program (PK4-12) for suburban families interested in attending Hartford Public Schools offering curriculum within a specially designed theme. Both Magnet school program and the Open Choice program are tuition free. In most cases, transportation is also provided free of charge.

Regional School Choice Office

165 Capitol Avenue-Room 363

Hartford, CT 06106

860.713.6988-T

860.713.7050-F

[www.choiceeducation.org](http://www.choiceeducation.org)

[www.crec.org](http://www.crec.org)



## Imagine Nation Preschool Learning Center

*Together we nurture...a love for learning.*

INPLC Logo April 2012

**One Pleasant Street**

**Bristol, CT 06010**

**860-582-1480**

**HOURS:**

**6:30AM -6:00PM**

**Monday-Friday**

**Serving Children**

**Ages 6 weeks**

**to 5 years**

**State of Connecticut  
Department of Public  
Health licensed**

**NAEYC Accredited**

**New "Imagine Nation  
Learning Park"**



**We are a Division of the  
Boys & Girls Club and  
Family Center of Bristol**

Our Mission at the Imagine Nation Preschool Learning Center is to create and provide an environment that inspires and enables all young people and families to mature into caring, responsible and productive citizens. We are committed to providing the highest quality early learning experience and the development of the individual child in areas of critical thinking, problem solving, independence, self-reliance, self-confidence and creativity in relation to the social values of family, community and cultural background.

**\*Every family who enrolls in our school will receive a FREE family membership which includes admissions to the Imagine Nation Museum, First Friday Family Festivals, and all of the annual special events sponsored at the museum.**

**We are School Readiness Funded program. School Readiness funds allow us to provide families a reduced tuition based on family size and income.**

## Connecticut Parent Advocacy Center

338 Main Street, Niantic CT 06357

Toll Free 1-800-445-2722



[www.cpacinc.org](http://www.cpacinc.org)

The CT Parent Advocacy Center, Inc. (CPAC) is a statewide nonprofit organization that offers information and support to families of children with any disability or chronic illness, age birth through 26. The Center is committed to the idea that parents can be the most effective advocates for their children, given the confidence that knowledge and understanding of special education law and its procedures can bring.

Through outreach efforts and referrals from schools, social service agencies and other parents, the number of families that the Connecticut Parent Advocacy Center serves has grown dramatically over the past 27 years. We continue to take pride in providing prompt and personal assistance to all who contact us. CPAC is staffed by parents of children with disabilities who have training in, and personal experience with, the law and disability issues.

In addition to speaking with parents on a daily basis, CPAC staff conducts in-service presentations for schools, teachers-in-training and service providers throughout the state so that they may better understand and serve the parents with whom they work. Staff and Board members serve on numerous statewide committees and various organizations, representing issues that are of concern to parents and families in Connecticut

Thaddeus W. Bartles, O.D. and Megan L. Smith, O.D.  
*Family Optometrists*

271 Farmington Ave

Bristol, CT 06010

860-582-0702

thaddeus.bartles@snet.net

## HOURS

Monday  
through  
Saturday  
by  
Appointment

Dr. Bartles was  
named  
*Optometrist  
of the  
Year for 2011*  
by the  
Connecticut  
Association of  
Optometrists!

Children can not learn if they can not see correctly. A comprehensive eye examination will determine how well a child's eyes can focus, how well the eyes work together and how well the brain interprets what a child is seeing. In addition to providing an eye examination that specifically targets a child's needs, Dr. Bartles and Dr. Smith are available for school visits and lectures to parent, school, and community groups.

### DR. BARTLES & DR. SMITH

Are Advanced Practice Optometrists:  
they are licensed to treat visual and  
other medical eye problems.



"Building Your Child's Future"

"Voted Best Pre-school by  
the Bristol Observer"

736 King Street  
Bristol, CT06010  
860-584-9642

[cns@grace-baptist.net](mailto:cns@grace-baptist.net)

Director: Cheri Tessier

We serve 3 & 4 year olds

Snack & Drink are provided

Hours:

Monday—Friday  
9:00am -12:00 p.m.

Class size:

3's up to 20

4's up to 24

Child/Staff ratio 7:1

It is our purpose to encourage the educational, physical, social, emotional and spiritual growth of pre-school children. In a relaxed and friendly atmosphere your child will grow to enjoy their nursery school experience with friends and teachers who care.

"Celebrating our 30th Anniversary in 2012-2013 School Year"







Carrier Learning Center

**Carrier Learning Center**  
 1168 Farmington Avenue  
 Bristol, CT 06010  
 860-589-3000

[www.CarrierLearningCenter.com](http://www.CarrierLearningCenter.com)

**Business Hours:**  
 Monday-Friday 6:45 a.m.-6 p.m.

**Carrier Learning Center** believes that every child is loving and unique in his or her own way. We make sure every child has the opportunity to grow and succeed at his or her fullest potential in our program. We believe children are inquisitive beings that are curious and need to learn and make sense of the world around them. This is why we find it important to provide children with the opportunity to explore their environment.

**Childcare Preschool Before And After School Care**

6 Weeks - 12 Years Old Nutritious meals including breakfast, hot lunch, and two snacks Highly trained staff / CPR and first aid certified Secure state-of-the-art educational play material	Developmentally age appropriate curriculum program Infant / Toddler Sign Language Transportation to local schools Summer camp programs
--	---

- Infant Program (6 weeks - up to 14-16 months)
- Toddler Program (16 months - 24 months)
- Two's Program (2 - 3 years)
- Preschool Program (3 - 4 years)
- Pre-Kindergarten (4 - 5 years)
- School Age (5 - 12 years)



**BRISTOL PUBLIC LIBRARY  
 CHILDREN'S DEPARTMENT**



**Fall Story times & Reading Clubs**  
 for Children ages 0-12 years October–December  
 Winter/Spring Story times and Reading Clubs for  
 Children ages 0-12 years- February-April  
**Summer Reading - June through August**  
**Special Programs - ALL YEAR!**

**Everything is FREE**

*Please ask about our OUTREACH to preschools program!*  
*We will visit your school for story time activities!*

Bristol Public Library Children's Department

5 High Street, Bristol, CT 06010

Phone: 860-584-7787 Ext. 2021

Fax: 860-584-7696

On the Web: <http://www.bristollib.com>

Facebook: Bristol Library—Children's Department

[Visit our Blog and Facebook pages to see schedules of events!](#)





Our philosophy is to provide early care and education to children aged 3-5 to assist in their healthy, emotional, social, mental, and physical development for lifelong learning.

We have 2 locations:

School Street

Hours:

6:30am—5:00pm

Monday—Friday

West Street

Hours:

6:30am—6:00pm

Monday -Friday

**MEALS ARE PROVIDED!**

**NAEYC Accredited**

**Class sizes: 16-18 Students.**

**Child/Staff ratio is 1:10.**

**Fees are based on a sliding scale.**

**Contact Person:**

**Shirley Anderson**

**Shirley@bristolpreschool.com**

**On the web at:**

**www.bristolpreschool.com**

**Family & Consumer Sciences Department from  
Bristol Central High School**



**Bristol Central High School  
P.O. Box 700  
480 Wolcott Street  
Bristol, CT 06010  
860-584-7735**

**Family & Consumer Sciences** courses offer necessary skills and knowledge to promote wellness across the lifespan. Foods classes offer nutrition information, food preparation techniques, and a foundation for careers in food services. *Child Development classes include information for understanding family relationships, the growth and education of children, and well as careers involving children.* The University of Connecticut Course, (Individual and Family Development HDFS190) is offered to juniors and seniors with a strong interest in human development and the impact of the family system on a person's development.

**AWARD WINNING PROGRAM!**



BRISTOL - Two Bristol Central High School teachers received a plaque from the Board of Education for their work with students studying early childhood education. Family and consumer sciences teachers Maureen Moskowitz and Tina Twiggs were recognized last week for having their students achieve the number one ranking in the state on the 2012 Connecticut Statewide Career and Technical Educational (CTE) Assessment, in the area of early childhood education services, family and consumer...  
*The Bristol Press December 2012!*





## BRISTOL-BURLINGTON HEALTH DISTRICT

240 Stafford Avenue, Bristol, Connecticut 06010-4617  
Tel. (860) 584-7682 • Fax (860) 584-3814 • [www.bbhd.org](http://www.bbhd.org)

The Bristol-Burlington Health District (BBHD) is a **full-service** local public health agency serving the communities of Bristol and Burlington. The District offers a number of services and programs that protect the health & safety of its residents.



### SERVICES PROVIDED

- School Health (Pre-K to Grade 12)
- Oral Health (K to Grade 5)
- Environmental Health
- Disease Prevention and Control
- Public Health Emergency Planning
- Health Education



### IMMUNIZATION CLINIC

- Vaccine for Children Program (Available free for Ages 3-18)  
Clinic Hours -Mondays 2:15- 4:15 pm (EXCEPT HOLIDAYS) and by appointment.
- School Immunization Records (Available for a fee of \$20.00)

## BRISTOL SCHOOL DEPARTMENT

[www.bristol.k12.ct.us](http://www.bristol.k12.ct.us)

860-584-7059

### We offer 3 Pre-K programs for Bristol Children:

- School Readiness at Mountain View School (for 3's and 4's ) and at South Side School (for 4's)
- Early Childhood Pre-K (4 years olds) at Greene-Hills & West Bristol schools
- Early Childhood Learning Centers - Community Peers at Stafford & Hubbell schools

### School Year Play Groups

At Southside (860-584-7812 Ext. 143)

West Bristol (860-584-7815 Ext. 1011/1013)

and Mountain View Schools (860-584-7726)

*Call each school or visit their websites for more information*

The preschool programs meet for half day sessions either mornings or afternoons.

Children are selected following a screening process.

You must be a resident of Bristol and provide proof of residency.

Bristol Public Schools provides a language rich learning experience in which all children, regardless of ability, learn and interact together in an educational setting. A transdisciplinary model is utilized with early childhood educators, special education teachers, teaching assistants, and related services staff.

WE FOCUS ON SKILLS TO PREPARE CHILDREN FOR KINDERGARTEN

Children who are Kindergarten age eligible - turn 5 on or before January 1 - are not eligible for the Preschool Programs.

The Bristol Board of Education does not charge fees for its pre-kindergarten programs. We have a limited number of slots available and need to know that when a student enrolls, the parent makes a commitment to having their child attend every day unless they are ill. Students who are repeatedly truant will be asked to leave the program. At the at time, a child on the wait-list will be added to the class.

*Fun and Learning!*

# Bristol Head Start

Head Start is an income eligible preschool program for 3 and 4 year olds.

Head Start offers a variety of services including, health and dental services, nutritious meals, parent education and involvement, plus family advocacy.

## Head Start:

- Provides breakfast, lunch and afternoon snack
- Is **FREE** to those eligible
- Has a class size of 19
- Has a 10:1 child/teacher ratio



[acaucci@bcoct.org](mailto:acaucci@bcoct.org)



**Contact  
Amy Caucci**



HOURS  
8:15am  
Till  
2:15pm

**Tel: 860-584-9307**

# Kids Dental Care



We provide the highest quality of dental care in a nourishing atmosphere while protecting your child's delicate psyche & contributing to building positive self image with an emphasis on general well-being.

**We accommodate ages  
1 year to 21 years**

## **Hours:**

**Mon. 8-5pm**

**Tues. 8-7pm**

**Wed. 8-7pm**

**Thurs. 8-5pm**

**Fri. 8-5pm**

**Some Sat. 8-5pm**



**733 Terryville Ave  
Bristol, CT 06010  
877kids@gmail.com**

**PHONE: 860-584-0441  
FAX: 860-516-8918**

**Contact Enam  
for your appointment!**



# Liberty Baptist

Liberty Baptist  
265 Maple Avenue  
Bristol, CT 06016

Daycare

## "A place that you can trust"

Licensed by the state of Connecticut

- Hours are from 6:30 a.m. to 6:00 p.m
- 6 week old infants through 8 year olds (before & after school care) accepted
  - Nursery program
- Structured learning environment (including phonics) for 2 years olds through K5
  - Lessons taught from the Bible
- Loving, caring, compassionate staff
- Providing family-like surroundings
  - Parents involvement encouraged

Call director, Kathy Orie at 860-589-0000 ext. 2



Dr. Jamie Motyka  
710 King Street, Bristol, CT 06010

**Office Hours**  
Mon 9-5 Tues 10-6  
Thu 9-5 Fri 9-5  
Saturdays and Evenings by  
Appointment Only.

Present This Flyer for a  
**\*FREE Initial Exam**

\*Free exam for self pay patients only

Call for an Appointment Today!  
**860.583.TINY**

Visit us on the web:  
[www.tinyteethct.com](http://www.tinyteethct.com)



## We Accept HUSKY!

Accepting **HUSKY** & Most Major Insurances. Convenient Payment Plans For Self Paying Customers.

### WE OFFER

- New state of the art equipment
- Digital xrays (less radiation)
- Xbox games/ plasma TV in the waiting room
- Watch your favorite movie/ cartoon during treatment on our TVs
- Conveniently located next to Bristol Eastern High School/across from Page Park
- Parents welcome during treatment.



## Personal Banking. The personal attention you deserve!

At Thomaston Savings Bank, we give you the personal attention you deserve. We provide a wide range of accounts and services to meet all of your financial needs.

- Personal Checking
- Savings
- Online Banking/Bill Pay
- Mobile Banking
- Overdraft Services
- Borrowing
- Envelope-free ATM
- Direct Deposit
- Self-Service Coin Processing
- Financial Planning

Monday, Tuesday	Lobby	8:30 a.m. - 4:00 p.m.
& Wednesday	Drive-thru	7:30 a.m. - 5:00 p.m.
Thursday	Lobby	8:30 a.m. - 6:00 p.m.
	Drive-thru	7:30 a.m. - 6:00 p.m.
Friday	Lobby	8:30 a.m. - 5:00 p.m.
	Drive-thru	7:30 a.m. - 5:00 p.m.
Saturday	Lobby	8:30 a.m. - 12:00 noon
	Drive-thru	8:30 a.m. - 12:00 noon

40 Middle Street | Bristol  
860.583.1874 | [www.thomastonsavingsbank.com](http://www.thomastonsavingsbank.com)



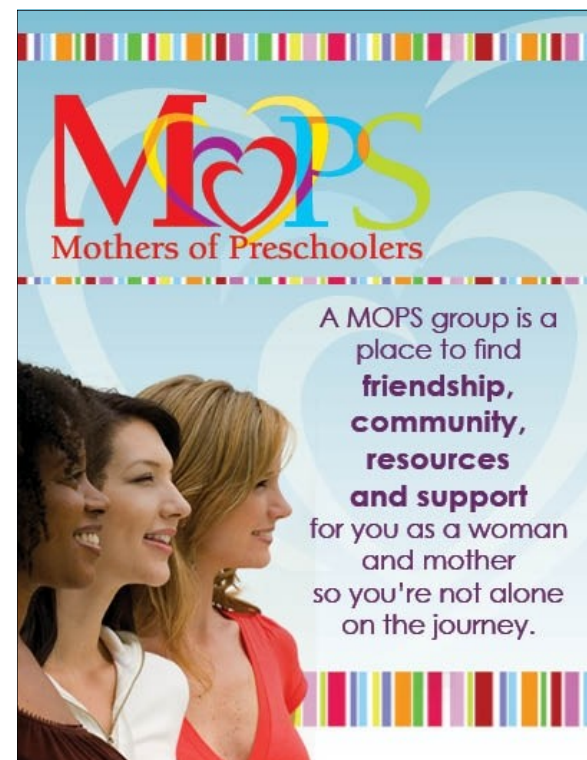
## Mothers of Preschoolers (MOPS)

Meets at Liberty Baptist Church Bristol, CT

MOPS is an international Christian organization for pregnant women and mothers of infants and pre-school aged children. MOPS group allows you to meet and build friendships with moms in your local community. MOPS meetings provide a fun safe environment for your children newborn- 5 years (MOPPETS), a bite to eat, and the support of other women who understand your struggles and joys as a mother of a little one. Each meeting has a special theme and includes crafts, speakers, special events or a curriculum to help engage in adult conversation. MOPS meets the first and third Tuesday of the month during the school year. If you have any questions, please feel free to call Talie White at 860-334-6472 or the Liberty Baptist Church Office at 860-589-0000. Hope to see you in

Talie White  
MOPS Coordinator

For general information about MOPS International- <http://www.mops.org/>



# The Family Wellness Center

\*A Project of Community Health Center, INC.

85 Lafayette St.  
New Britain, CT 06051  
[www.chc1.com](http://www.chc1.com)

Established in 1996, CHC of New Britain is the health care home for residents of the City of New Britain and many surrounding towns of Hartford County. It is the hub of an extensive set of CHC services including school based health centers and health care for the homeless clinics in the city's homeless and domestic violence shelters.

#### SERVICES:

- Comprehensive primary medical care for adults and children
  - Sick and urgent care
  - Well Child care and immunizations
    - Physical exams
  - Gynecological care, including family planning
    - Comprehensive Dental services
    - Certified diabetes education
    - Nutrition Counseling
  - Behavioral health services for adults and children
- Assistance with application for public insurance and other support programs
  - Breast and cervical cancer early detection programs
  - Podiatry



## The New England Carousel Museum



The New England Carousel Museum is dedicated to the acquisition, restoration, and preservation of operating carousels and carousel memorabilia and the creation of new carousel material, for the education and pleasure of the general public. The main mission of the New England Carousel Museum, a non-profit organization, is to preserve and protect antique wooden carousels and carousel pieces. We believe that the way to accomplish this task is through education. We are in the business of educating the children, who are the next generation of carousel lovers.

95 Riverside Avenue  
Bristol, CT 06010  
860-585-5411  
[www.thecarouselmuseum.org](http://www.thecarouselmuseum.org)

#### Museum Hours

Tuesday - Saturdays: 10:00am-5:00pm

Sundays: 12:00pm-5:00pm



# Queen of Apostles Montessori Education Center



472 East Road  
Bristol, CT 06010  
860-584-5009



[www.queenofapostlesmontessorict.org](http://www.queenofapostlesmontessorict.org)

Queen of Apostles Montessori School on 104 acres of neatly manicured land.

The School is staffed by the Religious Teachers Filippini, a Religious Order dedicated to the Christian education of youth. The School provides a quality Montessori education for 3 to 5 year olds

The Montessori Classroom is bright, warm, and cheery. The furniture is child-sized and comfortable.

The room is divided into several curriculum areas which include:

- Religion
- Practical Life
- Sensory Awareness Exercises
- Language Arts
- Math
- Geography
- History
- Science



Visit [www.gsocct.org](http://www.gsocct.org) for LOTS of great information about Girl Scouting!

Girl Scouting's mission statement is to build girls of courage, confidence, and character who make the world a better place. One way we do this is through the [Girl Scout Leadership Experience](#). The GSLE gives girl the three keys of leadership - Discover, Connect, and Take Action. Girls work through these keys as they use Leadership Journeys. In the Girl's Guide to Girl Scouting, girls expand their skills through badges & awards.

On October 1, 2007, Girl Scouts of Connecticut became the largest organization of women and girls in Connecticut, serving over 47,300 girls. Our headquarters is located at 340 Washington Street, Hartford. You can reach us at 860-522-0163, or toll free at 800-922-2770.

On my honor, I will try:  
To serve God\* and my country,  
To help people at all times,  
And to live by the Girl Scout Law.

\* Feel free to replace the word "God" with whatever word your spiritual beliefs dictate.

